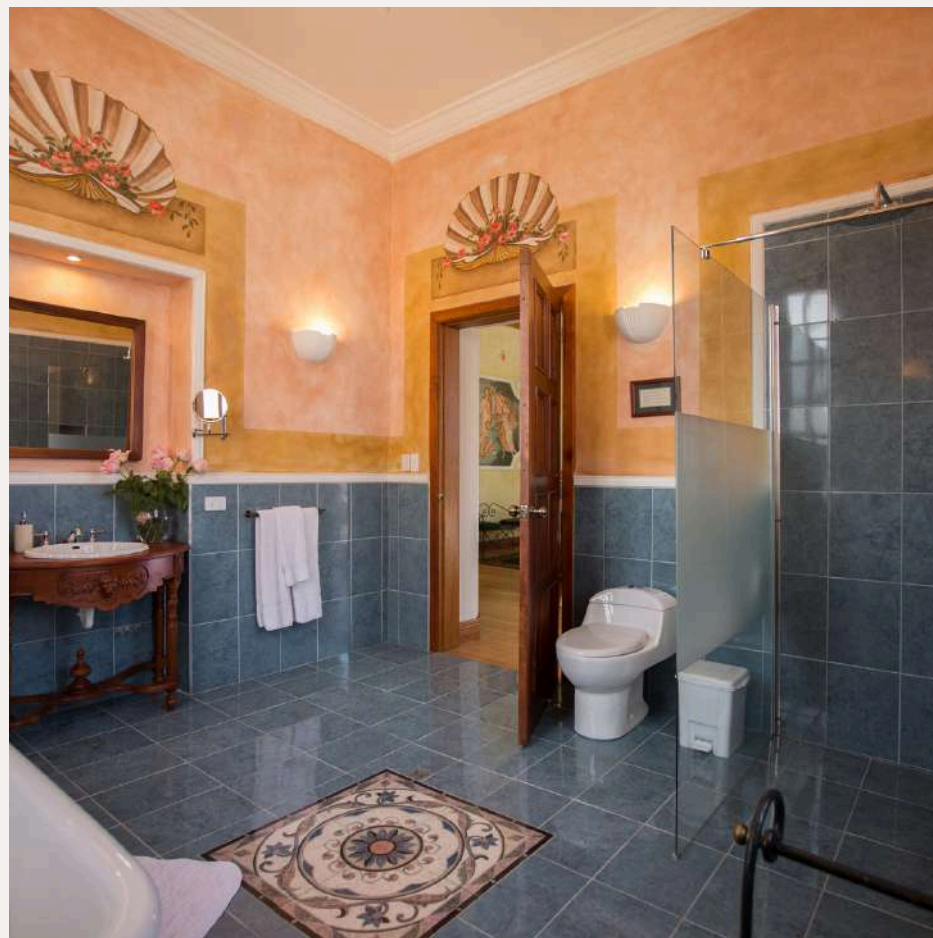




Summits of the Sun – Ecuador 10 Days





DAY 1 - ARRIVAL IN QUITO (2,850 M)

Upon arrival at Quito International Airport, you will be welcomed by our team and transferred to the Cultura Manor Boutique Hotel, internationally awarded as Ecuador's most elegant boutique property. In its historic gardens, enjoy a welcome cocktail followed by a light dinner prepared with the finest local ingredients. This refined environment provides the perfect beginning for your acclimatization and Andean adventure.

Accommodation: Cultura Manor Boutique Hotel.





DAY 2 - QUITO & ACCLIMATIZATION (4,050 M)

Spend the day exploring Quito's historic center, one of the first UNESCO World Heritage Sites. Walk through its colonial plazas, ornate churches, and vibrant streets filled with history. Visit landmarks such as the Compañía de Jesús Church and San Francisco Square.

In the afternoon, continue to the Middle of the World Monument, where you can stand on the equatorial line dividing the northern and southern hemispheres. This cultural immersion complements your acclimatization while experiencing Ecuador's heritage.

Accommodation: Cultura Manor Boutique Hotel.



DAY 3 - RUCU PICHINCHA (4,696 M)

Today's ascent takes you to Rucu Pichincha, the guardian volcano overlooking Quito. This climb is ideal for acclimatization, with a combination of gentle trails and more demanding sections. From the summit, breathtaking views of the Andean range await. Return to Cultura Manor for rest and indulge in a gourmet dinner paired with fine wines. Accommodation: Cultura Manor Boutique Hotel.



DAY 4 - ANTISANA (5,704 M)

Early in the morning, head towards the Antisana Ecological Reserve, one of Ecuador's hidden gems. This majestic volcano offers the chance to hike across glaciers or reach its summit, depending on weather conditions. It is a significant step up in altitude, ensuring optimal preparation for the greater climbs ahead. Afterward, relax once more in the comfort and sophistication of Cultura Manor.

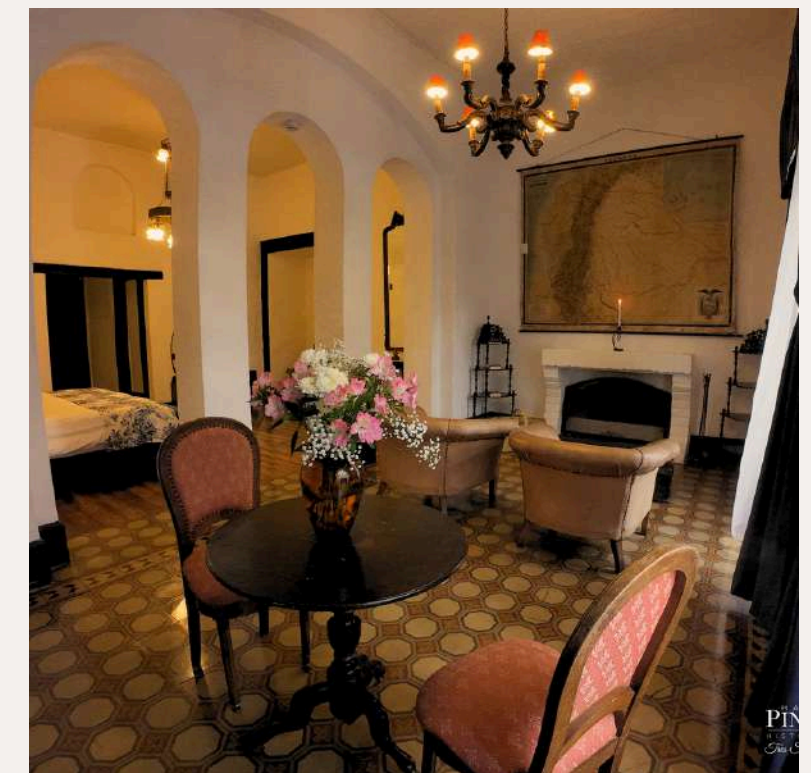
Accommodation: Cultura Manor
Boutique Hotel.



DAY 5 - HACIENDA PINSAQUÍ (2,700 M)

Leave the capital and travel north to Otavalo, famous for its vibrant indigenous handicraft market. En route, visit the Cuicocha Lagoon, a stunning volcanic caldera with turquoise waters. Walking around its rim provides both spectacular scenery and further acclimatization. In the evening, settle into Hacienda Pinsaquí, a colonial estate dating back to the 18th century, where history and tradition create an unforgettable atmosphere.

Accommodation: Hacienda Pinsaquí.



DAY 6 - CAYAMBE (5,790 M)

At midnight, begin the climb to Cayambe, the only major volcano located directly on the equatorial line, renowned for its spectacular glaciers. Led by certified mountain guides, you will tackle one of Ecuador's most iconic climbs. Upon descent, return to Hacienda Pinsaquí and relax by a warm fire while sharing mountain stories in a cozy, historic setting.

Accommodation: Hacienda Pinsaquí.





DAY 7 - HACIENDA LA CIÉNEGA (2,800 M)

Continue south towards Lasso, stopping for a gentle acclimatization walk at Limpiopungo Lagoon, located at the foot of Cotopaxi. Later, check into Hacienda La Ciénega, one of Ecuador's oldest and most storied estates, once host to renowned explorers such as Alexander von Humboldt. Its colonial courtyards and massive stone walls carry centuries of history and elegance.

Accommodation: Hacienda La Ciénega.





DAY 8 – COTOPAXI (5,897 M)

Before dawn, set out to climb the legendary Cotopaxi, one of the world's most iconic volcanoes, known for its perfectly symmetrical snow-capped cone. The ascent demands endurance and determination, but standing atop the summit at sunrise offers an once-in-a-lifetime reward. Return to Hacienda La Ciénega and celebrate with a traditional Ecuadorian dinner.

Accommodation: Hacienda La Ciénega.



DAY 9 – HACIENDA ABRASPUNGO (2,750 M)

Travel onwards to Riobamba, the city of mountains. Visit the Chimborazo Wildlife Reserve, home to wild vicuñas, llamas, and alpacas, while admiring the immense snow-covered peak towering above. In the evening, rest at Hacienda Abraspungo, a refined property blending traditional Andean architecture with modern comfort, setting the stage for the grand finale of your journey.

Accommodation: Hacienda Abraspungo.



CONTACT US:

+593 2224271

+593 994959503

EXCLUSIVE HOTELS & HACIENDAS OF ECUADOR

QUITO, ECUADOR

WWW.EHHEC.COM